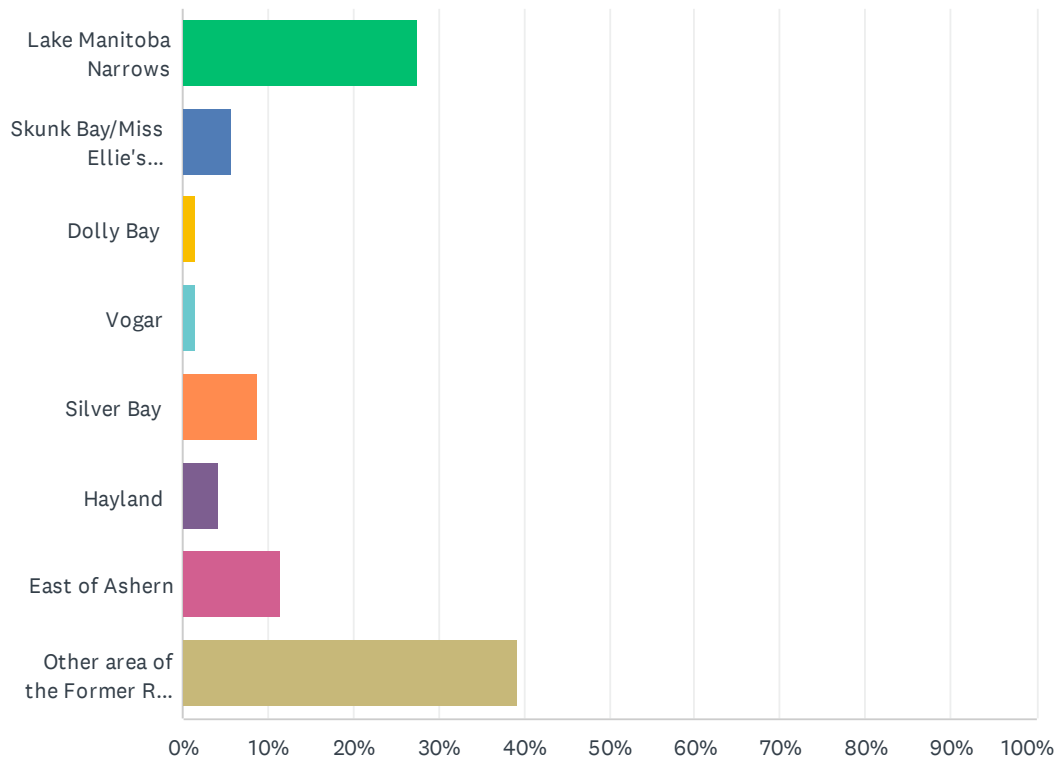


Q1 What area of the municipality do you live in?

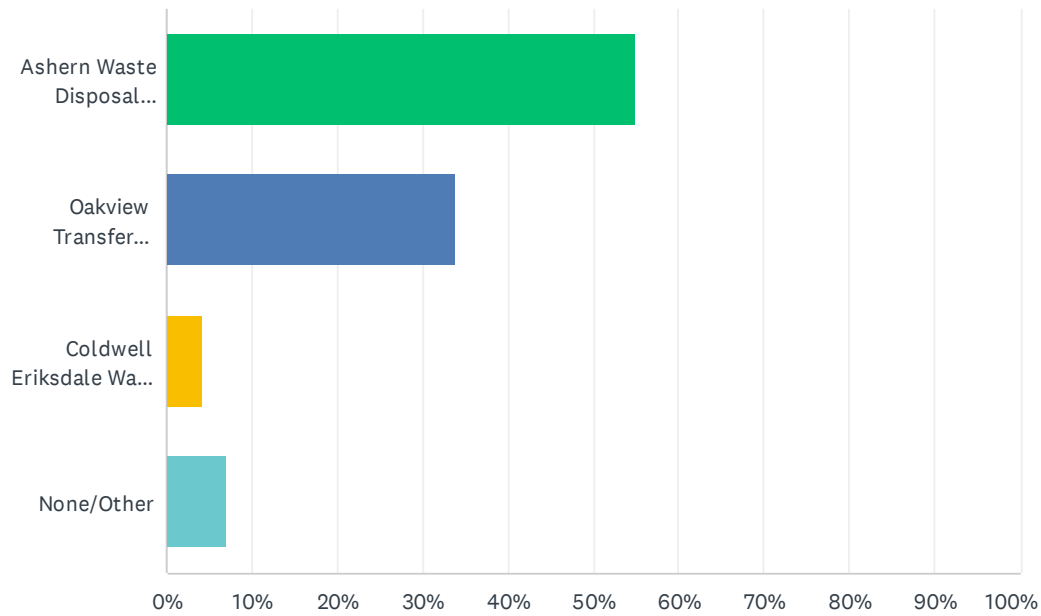
Answered: 69 Skipped: 3



ANSWER CHOICES	RESPONSES	
Lake Manitoba Narrows	27.54%	19
Skunk Bay/Miss Ellie's Development	5.80%	4
Dolly Bay	1.45%	1
Vogar	1.45%	1
Silver Bay	8.70%	6
Hayland	4.35%	3
East of Ashern	11.59%	8
Other area of the Former RM of Siglunes	39.13%	27
TOTAL		69

Q2 Which municipal landfill/transfer station do you utilize the most?

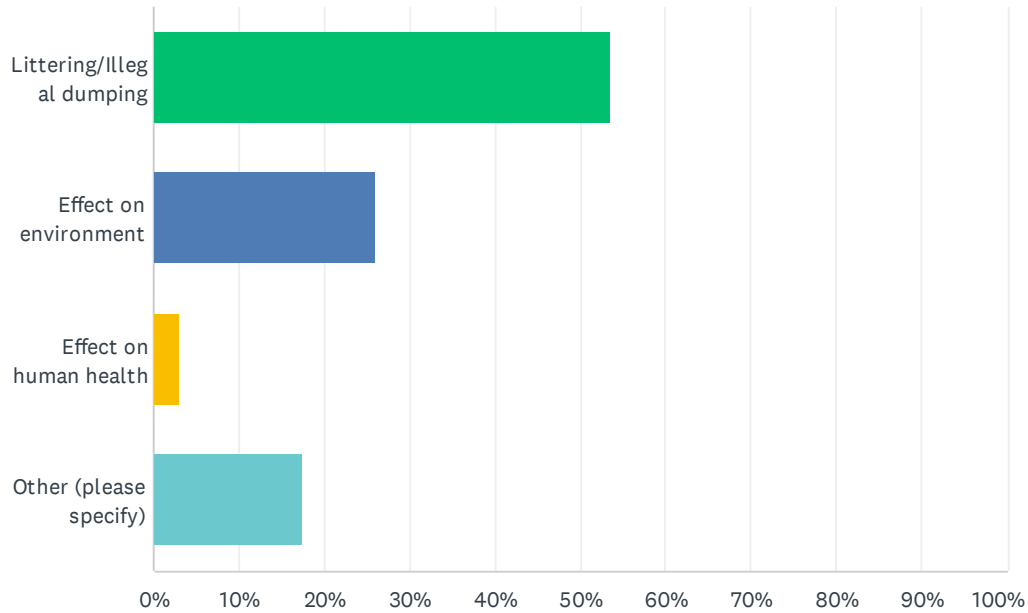
Answered: 71 Skipped: 1



ANSWER CHOICES	RESPONSES	
Ashern Waste Disposal Grounds	54.93%	39
Oakview Transfer Station	33.80%	24
Coldwell Eriksdale Waste Disposal Grounds	4.23%	3
None/Other	7.04%	5
TOTAL		71

Q3 In your opinion, which of these is a priority concern about waste in the area?

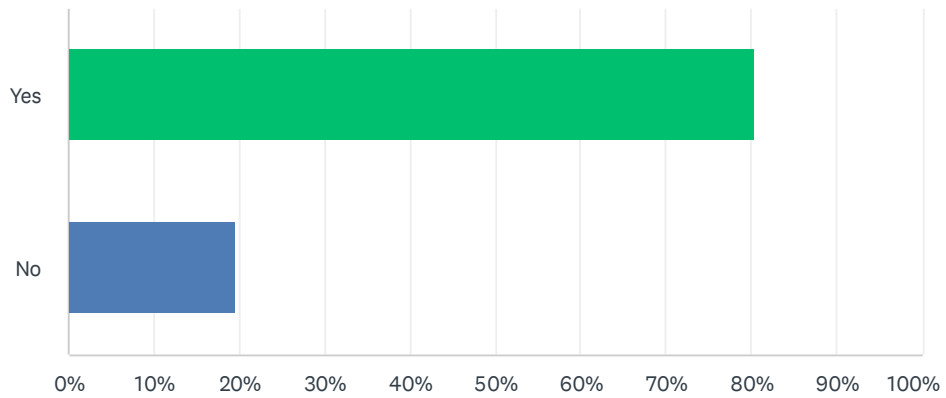
Answered: 69 Skipped: 3



ANSWER CHOICES	RESPONSES	
Littering/Illegal dumping	53.62%	37
Effect on environment	26.09%	18
Effect on human health	2.90%	2
Other (please specify)	17.39%	12
TOTAL		69

Q4 Would you utilize garbage collection services if offered to your area?

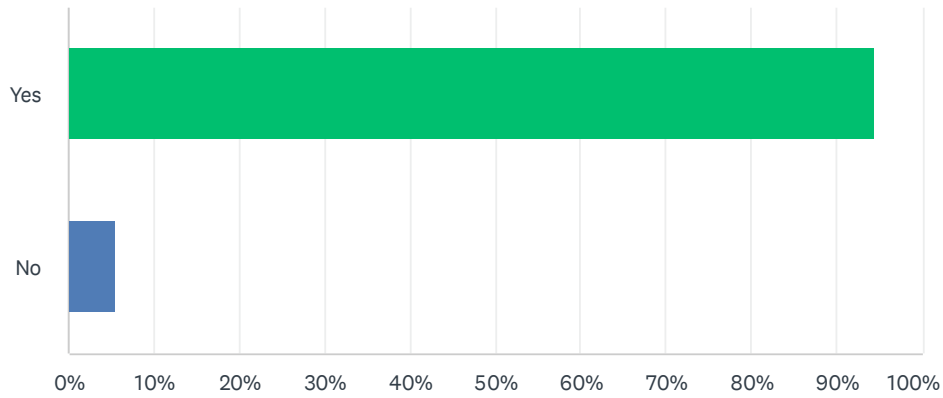
Answered: 71 Skipped: 1



ANSWER CHOICES	RESPONSES	
Yes	80.28%	57
No	19.72%	14
TOTAL		71

Q5 If collection services are offered, garbage and recycling would have to be separated for pick up. Do you currently separate your recycling from garbage?

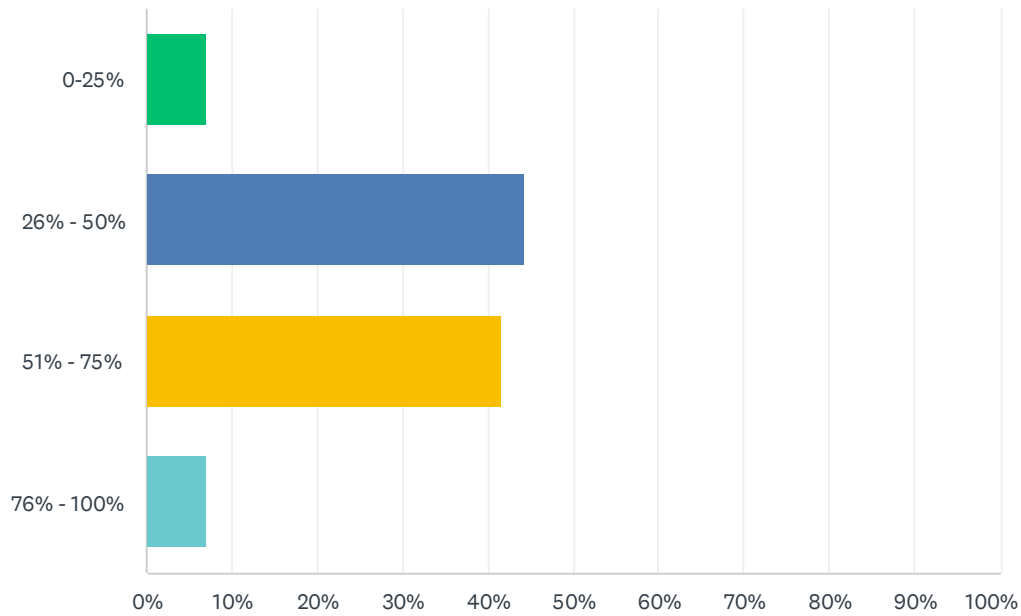
Answered: 72 Skipped: 0



ANSWER CHOICES	RESPONSES	
Yes	94.44%	68
No	5.56%	4
TOTAL		72

Q6 What percentage of your generated waste is recycling?

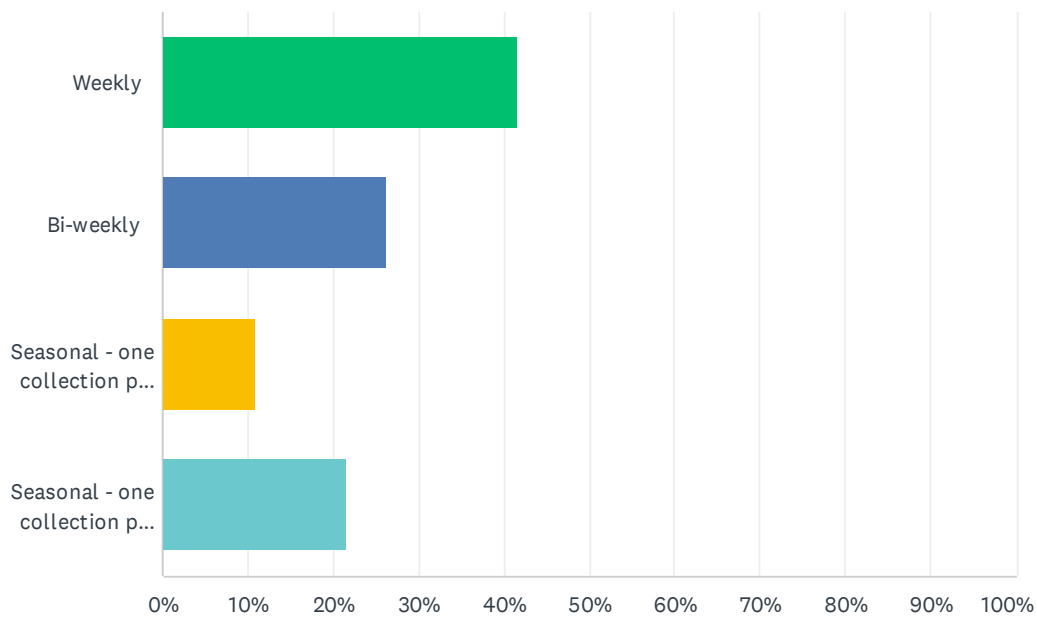
Answered: 72 Skipped: 0



ANSWER CHOICES	RESPONSES
0-25%	6.94% 5
26% - 50%	44.44% 32
51% - 75%	41.67% 30
76% - 100%	6.94% 5
TOTAL	72

Q7 How often would you like collection services to be offered?

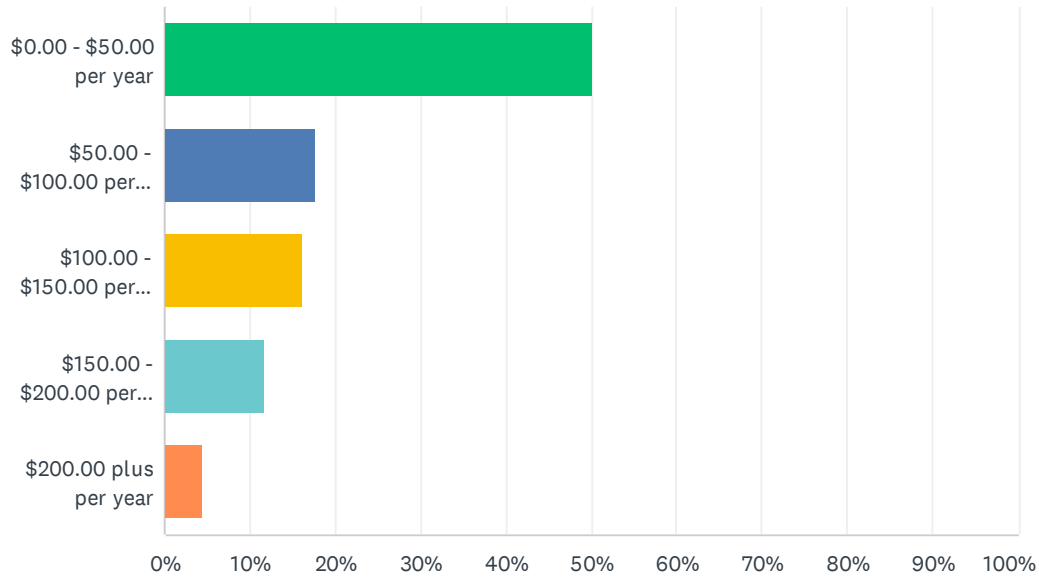
Answered: 65 Skipped: 7



ANSWER CHOICES	RESPONSES	
Weekly	41.54%	27
Bi-weekly	26.15%	17
Seasonal - one collection per week May 1 - October 1 changed to every two weeks in the off season	10.77%	7
Seasonal - one collection per week May 1 - October 1 changed to no pick up in the off season	21.54%	14
TOTAL		65

Q8 What would you be willing to pay for garbage collection services in your area?

Answered: 68 Skipped: 4



ANSWER CHOICES	RESPONSES	
\$0.00 - \$50.00 per year	50.00%	34
\$50.00 - \$100.00 per year	17.65%	12
\$100.00 - \$150.00 per year	16.18%	11
\$150.00 - \$200.00 per year	11.76%	8
\$200.00 plus per year	4.41%	3
TOTAL		68

Q9 Do you have any comments or concerns regarding garbage/recycling collection?

Answered: 45 Skipped: 27